

DRACO - LYNX LED PANELS

Led power & output - Tc 25°C

- 34W - 4000K - **7200 lm** - 220-240V 50/60Hz
- 34W - 3000K - **6840 lm** - 220-240V 50/60Hz
- 38.3W - 4000K - **8100 lm** - 220-240V 50/60Hz
- 38.3W - 3000K - **7650 lm** - 220-240V 50/60Hz
- 61.2W - 4000K - **12600 lm** - 220-240V 50/60Hz
- 61.2W - 3000K - **12060 lm** - 220-240V 50/60Hz



Luminaire power & output - Ta 25°C

- 40W - 4000K - **4000 lm** - 220-240V 50/60Hz
- 40W - 3000K - **3800 lm** - 220-240V 50/60Hz
- 45W - 4000K - **4500 lm** - 220-240V 50/60Hz
- 45W - 3000K - **4250 lm** - 220-240V 50/60Hz
- 72W - 4000K - **7000 lm** - 220-240V 50/60Hz
- 72W - 3000K - **6700 lm** - 220-240V 50/60Hz



Step MacAdam 3
Lifetime: 20Khr



White



Ceiling mounting,
recessed or
suspended



Protection
degree
IP40 Draco/Lynx
IP65 Lynx



Impact
resistance
IK04



Year
warranty
Draco



Year
warranty
Lynx



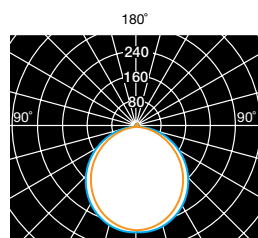
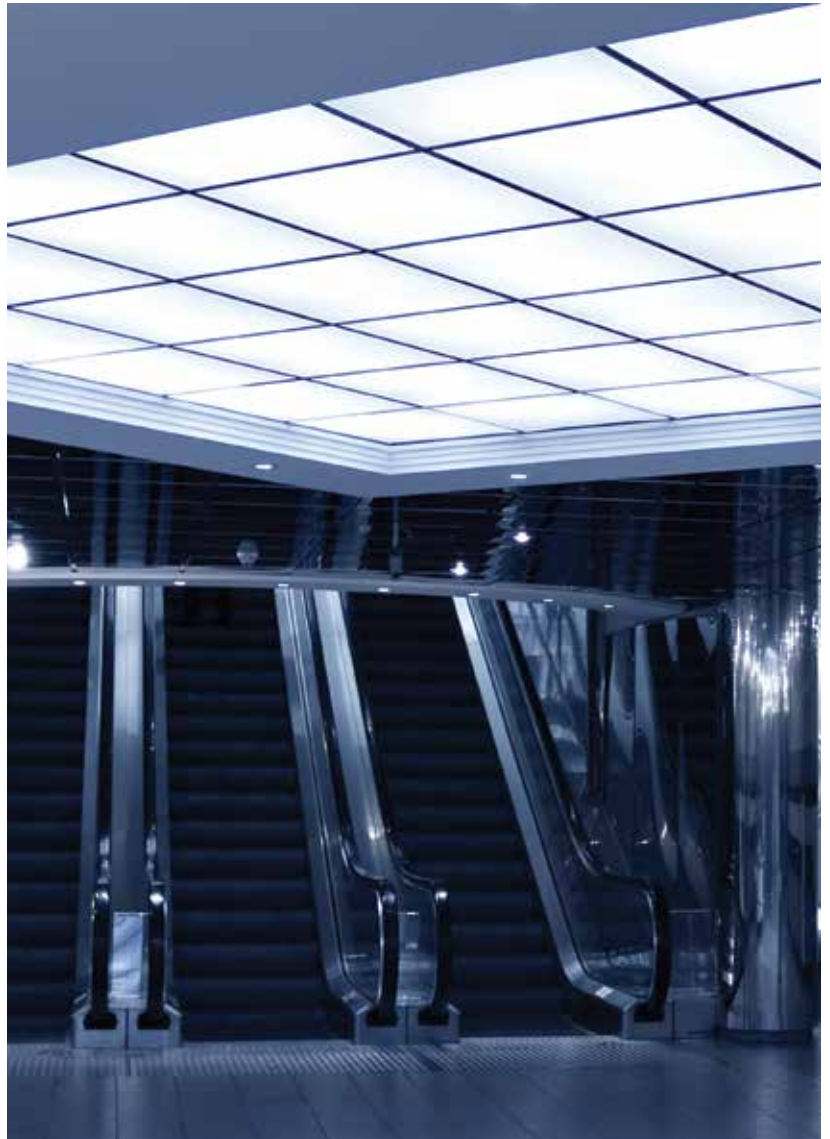
Photobiological
risk



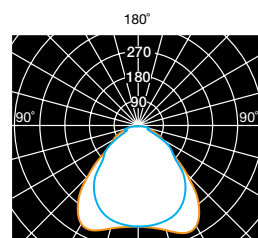
Dimmable versions
1-10V
DALI



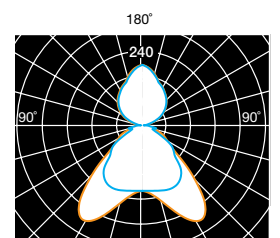
Colour
rendering
index



Draco - 40W/45W



Lynx - 40W/45W/72W



Lynx up/down - 45W

DRACO

LED's luminaire with remote driver

Technical details

- Indoor led panel for ceiling, recessed, suspension mounting through relevant accessories (to be ordered separately)
- IP20 driver DALI, 1-10V TUV certified
- Led SMD 4014 (3000K, 4000K)
- Light guide plate (LGP) 2mm
- A2 stainless steel screws
- Panel led IP44, driver IP20
- UGR<21
- Quick-fit connector

Diffuser

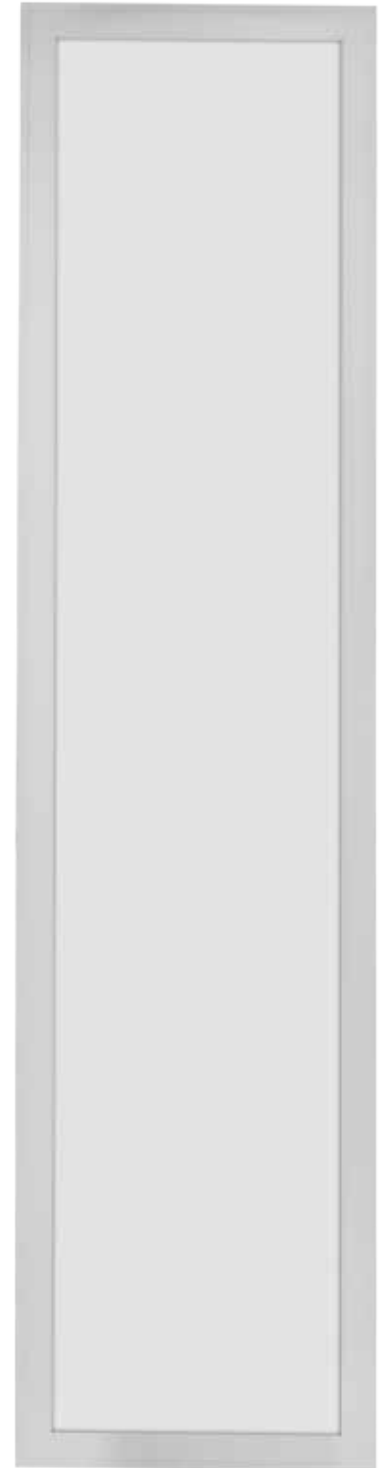
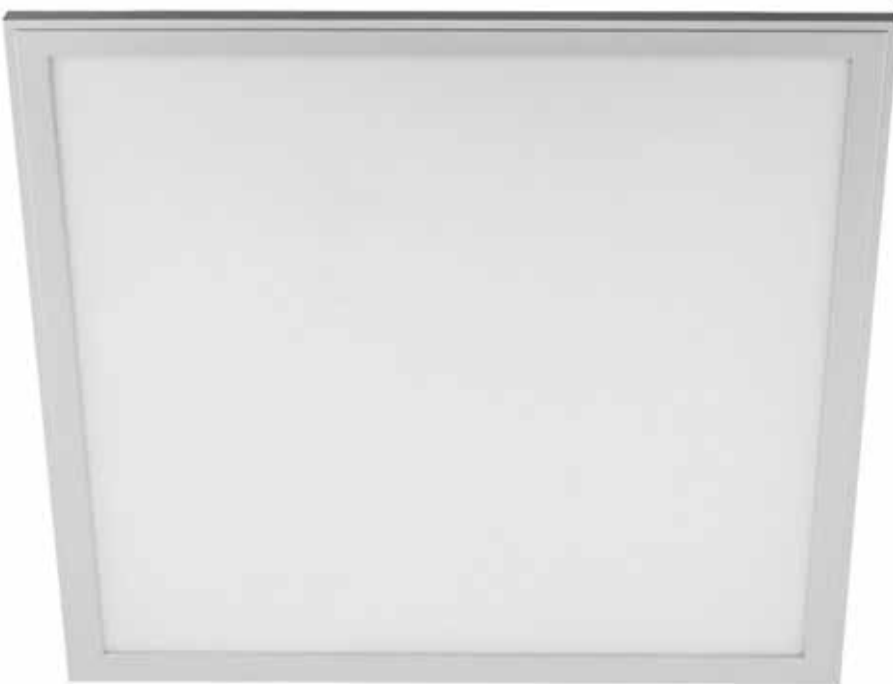
- White PS (polystyrene) diffuser

Housing

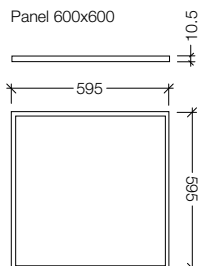
- Extruded aluminium frame anodized and coated
- Back sheet in reinforced thermoplastic

Optional accessories (to be ordered separately)

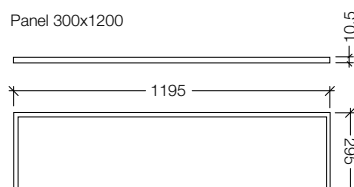
- Safety cable kit
- White frame of the various sizes suitable for ceiling mounting
- Accessories for suspension mounting:
 - n°4 anchors for 600x600
 - n°6 anchors for 300x1200
- Mounting kit for drywall:
 - n°1 kit per 600x600
 - n°2 kit per 300x1200
- Tridonic emergency kit:
 - Panel 40W/3h
 - Panel 45W/3h



Panel 600x600



Panel 300x1200



LYNX

LED's luminaire with remote driver

Technical details

- Indoor led panel for ceiling, recessed, suspension mounting through relevant accessories (to be ordered separately)
- Frame weight 483 gr
- IP20 flicker free driver DALI, 1-10V ENEC/TUV certified
- Led SMD 2835 (3000K, 4000K)
- Light guide plate (LGP) 3mm
- A2 stainless steel screws
- Safety cable kit included
- Panel led IP44, driver IP20
- UGR <19 Flicker free
- Quick-fit connector

Diffuser

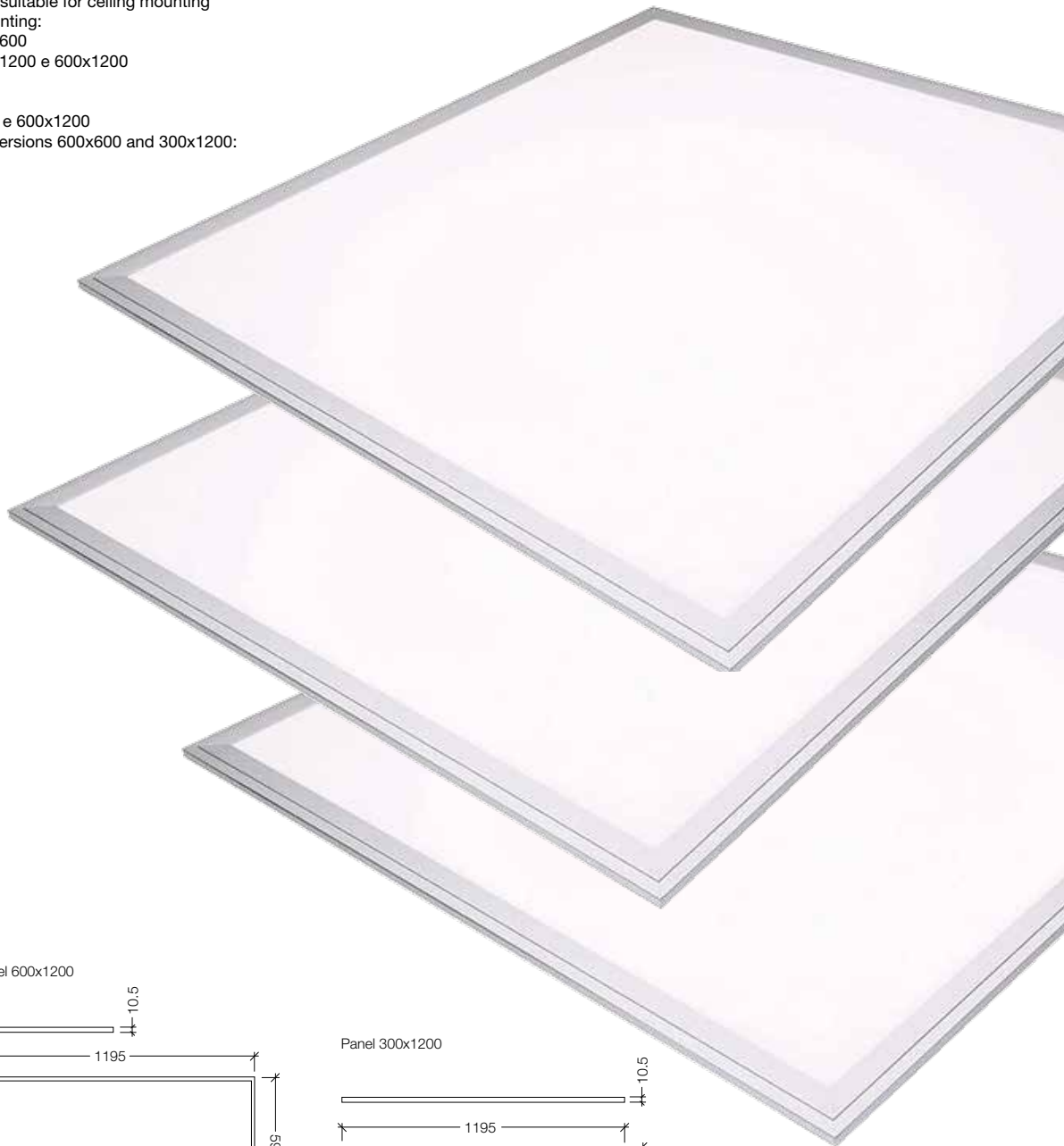
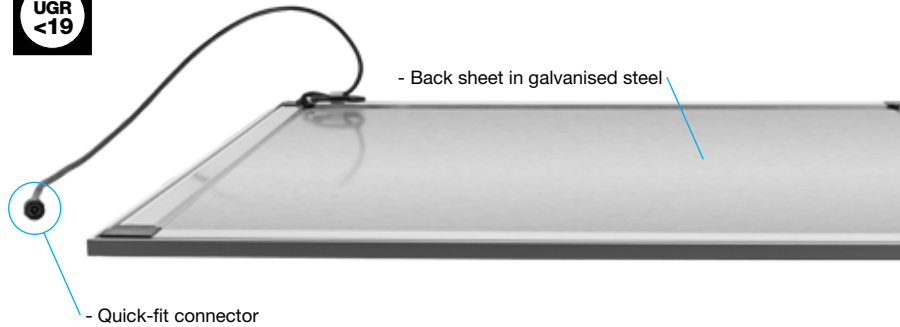
- White prismatic PS (polystyrene) diffuser

Housing

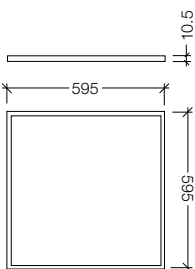
- Extruded aluminium frame anodized and coated
- Back sheet in galvanised steel

Optional accessories (to be ordered separately)

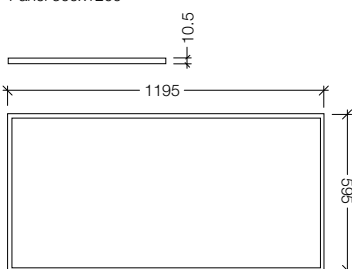
- White frame of the various sizes suitable for ceiling mounting
- Accessories for suspension mounting:
 - n°4 anchors for 600x600
 - n°6 anchors for 300x1200 e 600x1200
- Mounting kit for drywall:
 - n°1 kit per 600x600
 - n°2 kit per 300x1200 e 600x1200
- Tridonic emergency kit only for versions 600x600 and 300x1200:
 - Panel 40W/3h
 - Panel 45W/3h



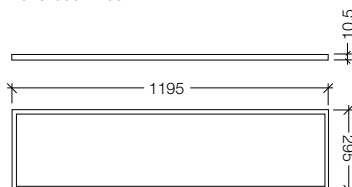
Panel 600x600



Panel 600x1200



Panel 300x1200



DRACO

LED's luminaire with remote driver

LYNX

LED's luminaire with remote driver

DRACO 600X600

Dimensions	Power	White
595x595mm	40W 4000K 4000 lm	0400.182G
	40W 3000K 3800 lm	0400.184G
	45W 4000K 4500 lm	0400.282G
	45W 3000K 4250 lm	0400.284G
	40W 4000K 4000 lm DALI	0400.582G
	40W 3000K 3800 lm DALI	0400.584G
	45W 4000K 4500 lm DALI	0400.682G
	45W 3000K 4250 lm DALI	0400.684G
	40W 4000K 4000 lm 1-10V	0400.782G
	40W 3000K 3800 lm 1-10V	0400.784G
	45W 4000K 4500 lm 1-10V	0400.882G
	45W 3000K 4250 lm 1-10V	0400.884G

DRACO 300X1200

Dimensions	Power	White
295x1195mm	45W 4000K 4500 lm	0402.182G
	45W 3000K 4250 lm	0402.184G
	45W 4000K 4500 lm DALI	0402.582G
	45W 3000K 4250 lm DALI	0402.584G
	45W 4000K 4500 lm 1-10V	0402.782G
	45W 3000K 4250 lm 1-10V	0402.784G

LYNX 600X600

Dimensions	Power	White
595x595mm	40W 4000K 4000 lm	0401.182G
	40W 3000K 3800 lm	0401.184G
	45W 4000K 4500 lm	0401.282G
	45W 3000K 4250 lm	0401.284G
	40W 4000K 4000 lm DALI	0401.582G
	40W 3000K 3800 lm DALI	0401.584G
	45W 4000K 4500 lm DALI	0401.682G
	45W 3000K 4250 lm DALI	0401.684G
	40W 4000K 4000 lm 1-10V	0401.782G
	40W 3000K 3800 lm 1-10V	0401.784G
	45W 4000K 4500 lm 1-10V	0401.882G
	45W 3000K 4250 lm 1-10V	0401.884G

LYNX 300X1200

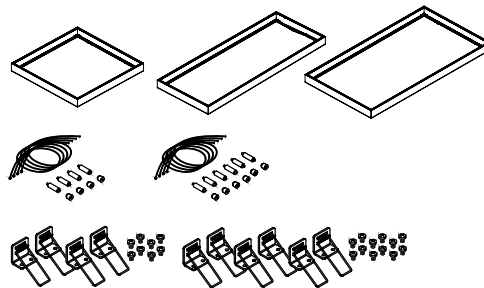
Dimensions	Power	White
295x1195mm	45W 4000K 4500 lm	0403.182G
	45W 3000K 4250 lm	0403.184G
	45W 4000K 4500 lm DALI	0403.582G
	45W 3000K 4250 lm DALI	0403.584G
	45W 4000K 4500 lm 1-10V	0403.782G
	45W 3000K 4250 lm 1-10V	0403.784G

LYNX 600X1200

Dimensions	Power	White
595x1195mm	72W 4000K 7000 lm	0405.182G
	72W 3000K 6700 lm	0405.184G
	72W 4000K 7000 lm DALI	0405.582G
	72W 3000K 6700 lm DALI	0405.584G
	72W 4000K 7000 lm 1-10V	0405.782G
	72W 3000K 6700 lm 1-10V	0405.784G

Optional accessories

	Code
White aluminium frame for ceiling mounting 600x600	0400.000B
White aluminium frame for ceiling mounting 300x1200	0400.0001
White aluminium frame for ceiling mounting 600x1200	0400.0005
Suspension kit 600x600 (n°4 complete anchors)	0400.0002
Suspension kit 300x1200 (n°6 complete anchors)	0400.0003
Universal clips for false-ceiling mounting (n°4 pieces)	0400.0004
Safety cable kit	0400.0007
Tridonic emergency kit for panel 40W-3h	0400.0012
Tridonic emergency kit for panel 45W-3h	0400.0013



LYNX IP65

LED's luminaire with remote driver



Technical details

- Indoor led panel for ceiling, recessed, suspension mounting through relevant accessories (to be ordered separately)
- IP65 flicker free driver DALI, 1-10V ENEC/TUV certified
- Watertight connection
- Led SMD 2835 (3000K, 4000K)
- Light guide plate (LGP) 3mm
- A2 stainless steel screws
- Safety cable kit included
- Panel led IP65
- Driver IP65
- UGR <19 Flicker free
- Quick-fit connector

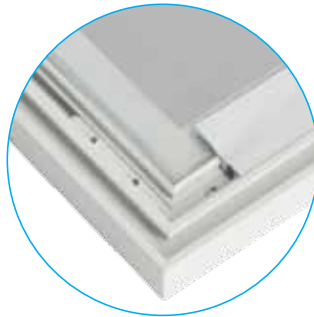


Diffuser

- White prismatic PS (polystyrene) diffuser

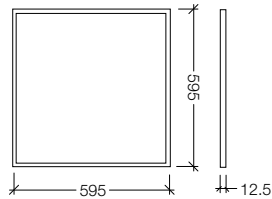
Housing

- Extruded aluminium housing anodized and coated
- Back sheet in galvanised steel



Optional accessories (to be ordered separately)

- White frame for the various sizes suitable for ceiling mounting
- Suspension kit (n°4 complete anchors)
- Drywall suspension kit (n°1 kit)
- Tridonic emergency kit panel 40W/3h



Dimensions	Power	White
595x595mm	40W 4000K 4000 lm	0401.382G
	40W 3000K 3800 lm	0401.384G

Optional accessories	Code
White aluminium frame for ceiling mounting 600x600	0400.000B
Suspension kit 600x600 (n°4 complete anchors)	0400.0002
Universal clips for false-ceiling mounting (n°4 pieces)	0400.0004
Tridonic emergency kit for panel 40W-3h	0400.0012



LYNX UP/DOWN

LED's luminaire with remote driver

Technical details

- Indoor led panel for suspension mounting
- IP20 flicker free driver DALI, 1-10V ENEC certified
- Led SMD 2835 (3000K, 4000K)
- Light guide plate (LGP) 3mm
- A2 stainless steel screws
- Safety cable kit included
- Suspension kit included (n°6 anchors)
- Driver box included in the packaging
- Panel led IP44, driver IP20
- UGR <19 Flicker free
- Quick-fit connector

Diffuser

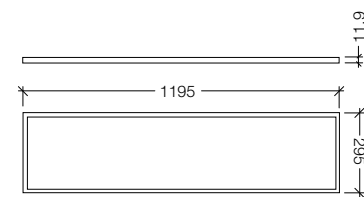
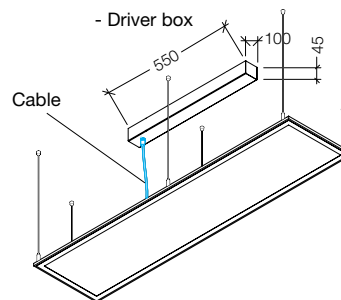
- White prismatic PS (polystyrene) diffuser

Housing

- Extruded aluminium housing anodized and coated

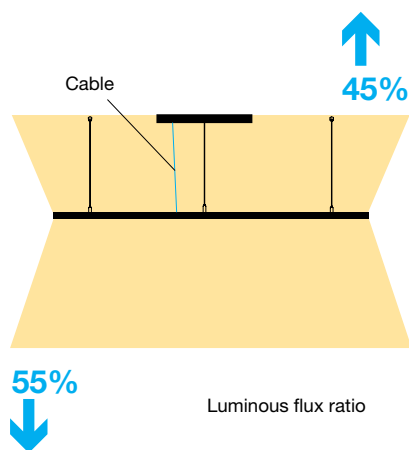
Optional accessory (to be ordered separately)

- Tridonic emergency kit panel 45W/3h



Dimensions	Power	White
295x1195mm	45W 4000K 4500 lm	0404.182G
	45W 3000K 4250 lm	0404.184G
	45W 4000K 4500 lm DALI	0404.582G
	45W 3000K 4250 lm DALI	0404.584G
	45W 4000K 4500 lm 1-10V	0404.782G
	45W 3000K 4250 lm 1-10V	0404.784G

Optional accessory	Code
Tridonic emergency kit for panel 45W-3h	0400.0013



45%

55%

Luminous flux ratio

