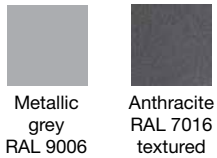


# DOOR BOLLARD/APPLIQUE

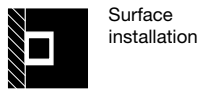
- Led power & output - Tc 25°C**  
6.5W - 4000K - **750 lm** - 220-240V 50/60Hz
- Luminaire power & output - Ta 25°C**  
8.8W - 4000K - **490 lm** - 220-240V 50/60Hz



Step MacAdam 4  
Lifetime: 30Kh



Ground installation



Surface installation



IP65  
Protection degree



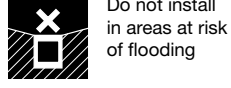
Impact resistance  
IK08



Year warranty



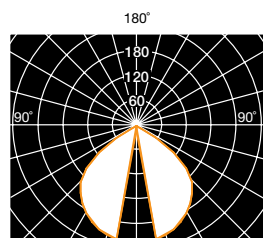
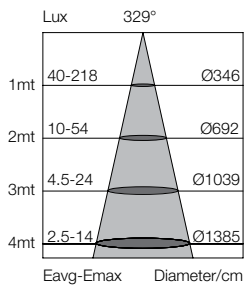
Photobiological risk



Do not install  
in areas at risk  
of flooding



Colour rendering index



Bollard



# DOOR APPLIQUE

LED's luminaire for 220-240V 50/60Hz supply tension

### Technical details

- Silicone gaskets
- Polyester powder coating after a treatment specific for weathering resistance
- A2 stainless steel screws

### Optics

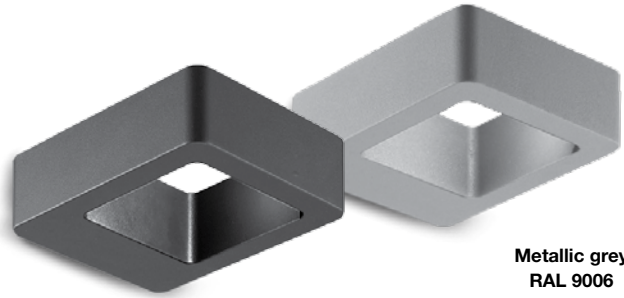
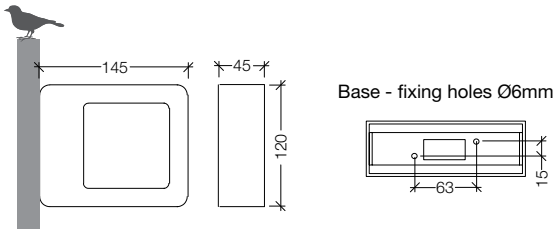
- Optics in anodised and painted die-cast aluminium

### Diffuser

- Flat, transparent, tempered glass diffuser

### Base

- Anodised and painted die-cast aluminium base



Anthracite  
RAL 7016  
textured

Metallic grey  
RAL 9006

Dimensions	Power	Metallic grey RAL 9006	Anthracite RAL 7016 textured
145x45x120mm	6.5W 4000K 750 lm	0144.182M	0144.182S

# DOOR BOLLARD

LED's luminaire for 220-240V 50/60Hz supply tension

### Technical details

- 650mm height
- Silicone gaskets
- Polyester powder coating after a treatment specific for weathering resistance
- A2 stainless steel screws

### Optics

- Optics in anodised and painted die-cast aluminium

### Diffuser

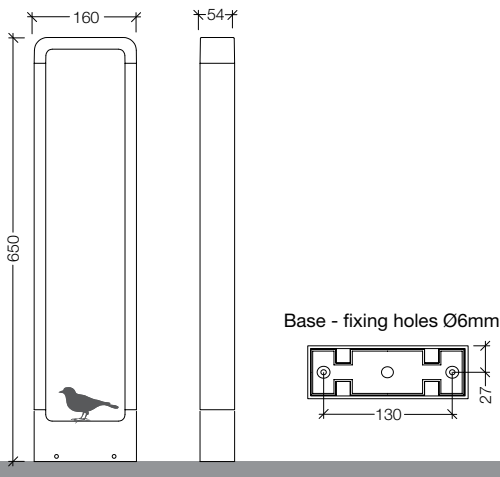
- Flat, transparent, tempered glass diffuser

### Housing

- Anodised and painted extruded aluminium housing

### Base

- Anodised and painted die-cast aluminium base



Anthracite  
RAL 7016  
textured



Metallic grey  
RAL 9006

Dimensions	Power	Metallic grey RAL 9006	Anthracite RAL 7016 textured
160x54x650mm	6.5W 4000K 750 lm	1044.182M	1044.182S